

PTFE GROUP OF COMPANIES



green belting industries
greenbelt industries
mapelli
biscor

Leading the Way in Engineered Process Materials

Stability & Strength Integrity Leadership Technology Lean
Core Values Quality Performance Passion Excellence





INTEGRITY
LEADERSHIP
QUALITY
COMMUNITY

Core Values

PTFE Group of Companies is drawn together by people who take pride in their work, respect their coworkers, and value the opportunity to get the job done right. The following credo helps all PTFE Group employees to remain focused on what is most important.

INTEGRITY – We strive to adhere to moral and ethical principles, soundness of moral character, and interacting with fellow employees, customers and suppliers in the most professional and respectful manner. All interactions and transactions are treated as mutually beneficial.

LEADERSHIP – Our leaders strive to help themselves and others do the right thing, set direction, walk the talk, build an inspiring vision of what can be achieved, and then most importantly, get it done.

QUALITY – We strive to ensure a culture of quality that requires all employees to actively participate in and take ownership for optimizing all processes, inputs and outputs, continuously, every day.

COMMUNITY– By working together, sharing common characteristics, interest and goals, we strive to build a supportive and enjoyable workplace where teamwork and fellowship enhance productivity and quality.



Stability & Strength

In 1966, Green Belting Industries began manufacturing coated performance materials for industrial use. Today, the four companies that comprise PTFE Group of Companies include Green Belting Industries (Canada), Biscor (UK), Greenbelt Industries (USA), and Mapelli S.R.L. (Italy).

While each of the four PTFE Group companies retains geographical and cultural uniqueness, our combined strengths and resources ensure quality and consistency across the enterprise. Each company plays an important part in the overall supply chain and benefits from the interchange of manufacturing, fabricating, and inventory excellence. In this way, PTFE Group can service customer needs more effectively and efficiently on a global scale.

Four international locations provide closer access to more markets, assist in building efficient global distribution channels, and offer protection from currency and economic fluctuation.

Overall financial stability and market access is further enhanced through the ownership structure provided by Ammeraal Beltech (AB), of Rotterdam, NL. With annual revenues exceeding €370 million, and affiliates in 26 countries that service markets in 150 countries worldwide, PTFE Group customers benefit from the strength and expanded reach that this provides.





Engineered for Performance

Fabrics, Tapes, Belts, and Specialty

PTFE Group is committed to providing the best selection and highest quality of Performance Fabrics, Tapes, Films, Belts, and Specialty Products made with the highest quality polymers and substrates including PTFE, silicone, UHMW, polyester, fiberglass, and aramid.

Key performance attributes include: resistance to extreme temperatures, chemical bonding, abrasion, compression, and punctures; high strength and stability; and a broad spectrum of thermal and dielectric properties.

Tapes are finished with silicone or acrylic adhesives, engineered for strength, clean release, and ease of use.

Belts are fabricated with solid fabrics or mesh, and a variety of splices, edges, and tracking options.

Specialty products include a number of engineered solutions like pre-cut shapes (die-cut or kiss-cut), nested masking and gasket sets, silicone-based masking compounds, foam rubber, and more.

All of our fabrics, tapes, and belting materials are chemically inert, and many are safe for food processing and handling, and compliant with FDA, USDA, REACH, and Department of Agriculture (Canada) requirements.

Products Groups

- Fluorofab® PTFE Coated Fiberglass Fabrics, Tapes, and Belts
- Silicone Coated Fiberglass Fabrics, Tapes, and Belts
- Fluorofab® PTFE Coated Aramid Fabrics, Tapes, and Belts
- PTFE Coated Open Mesh Belts, fiberglass or aramid
- Polyester Mesh Belts
- Silicone Based Masking Compounds
- Silicone Sponge Rubber
- Custom Pre-Cuts: Gaskets, Masking Profiles, Baking Sheet Liners, and more...



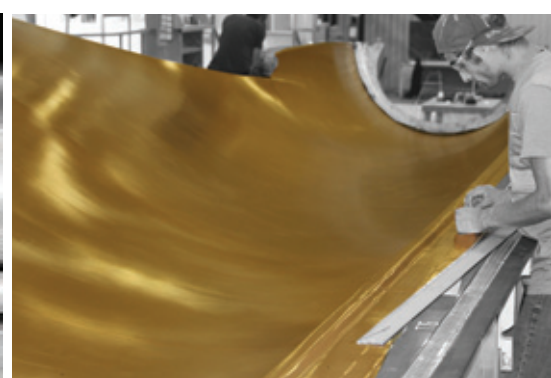
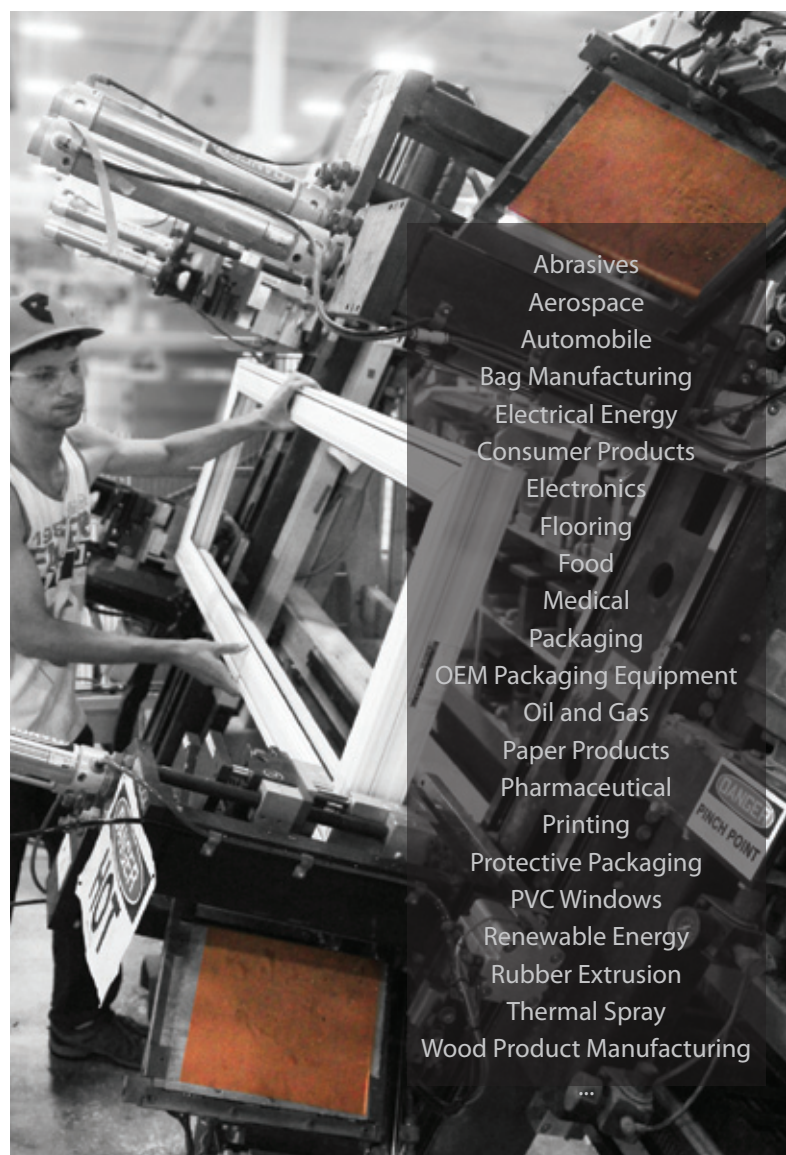
For a wide range of industries

Aerospace, Auto, Energy, Medical, Packaging, Food, Thermal Spray...

From cryogenic freezing of food products to the extremely high temperatures of thermal spray coating processes, our broad range of performance materials enhances productivity and efficiency across a wide range of industries.

Some of the more common applications include protective coverings used on the heat-sealing elements in poly film packaging equipment, mould release linings and peel-ply release sheets used in open and closed mould composite applications, and masking for thermal spray applications.

In total, our products have proven to enhance process efficiency and bottom-line performance in more than 120 different applications spanning 21 different industries.





Passion for Quality

Inputs, Process, Outputs, People

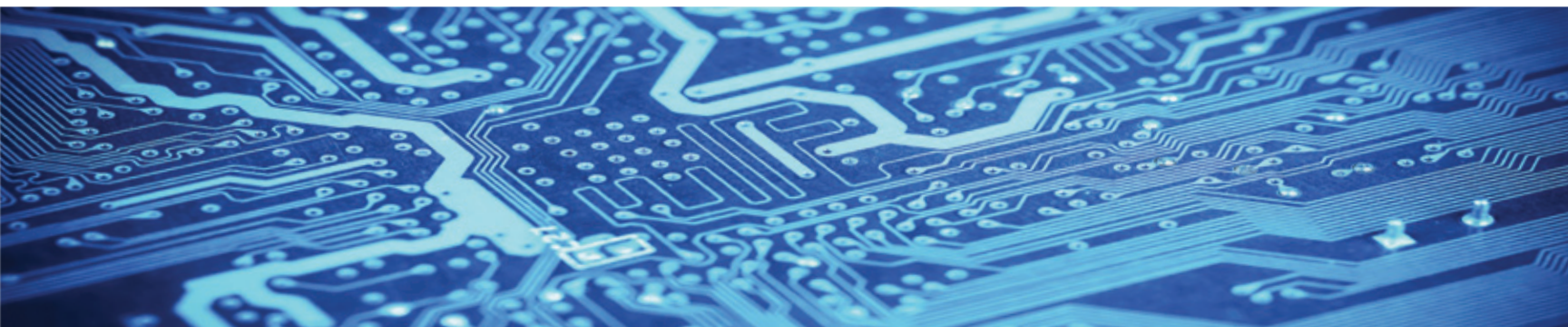
Quality has always been an important focus across all four PTFE Group companies. As each one has brought its own best practices for quality process and product, all companies have learned from each other and grown stronger together. The resulting high-quality culture that now shapes PTFE Group is a culmination of the strengths of all four capable companies. Together, all function as one enterprise with shared benchmarks across all areas, from supply chain to customer service.

We are proud to be an ISO 9001 Quality Registered Company, but our commitment to quality doesn't end there. Our ongoing enterprise goal of zero-defect product drives us to ensure that all processes, inputs, and finished product measure up to our own high standards.

Thanks to our own stringent quality standards, compliance with industry standards, and a very strong overall culture of quality, PTFE Group consistently meets the qualification standards of leading manufacturers.

PLAN				DO	CHECK	ACT
4. Context of the organization	5. Leadership	6. Planning for the QMS	7. Support	8. Operation	9. Performance evaluation	10. Improvement
4.1 Understanding the organization and its context	5.1 Leadership and commitment	6.1 Actions to address risks and opportunities	7.1 Resources	8.1 Operational planning and control	9.1 Monitoring, measurement, analysis and evaluation	10.1 General
4.2 Understanding the needs and expectations of interested parties	5.2 Quality policy	6.2 Quality objectives and planning to achieve them	7.2 Competence			
4.3 Determining the scope of the QMS	5.3 Organizational roles, responsibilities and authorities	6.3 Planning of changes	7.3 Awareness			
4.4 QMS and its processes		7.4 Communication	7.5 Documented information			



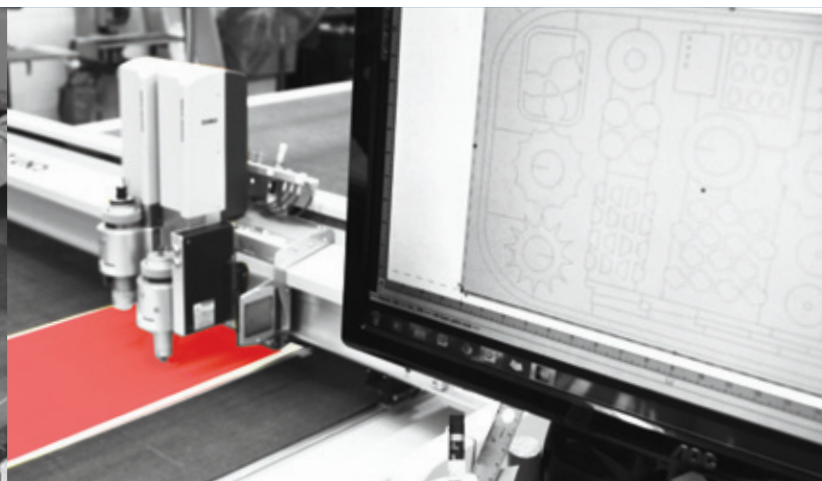


Technology Driven

From Lean Manufacturing to Enhanced Customer Service

The need for technology in today's manufacturing world is extensive and ever-changing. As demand for product performance grows, creating new challenges and testing the limits, we continuously adopt new, helpful technology that enables us to meet evolving output requirements while ensuring cost-effectiveness and productivity. A key strength of PTFE Group is our ability to match market trends and demands with new technologies that improve plant and office efficiency. Our adoption of new technologies extends to all areas of the enterprise, from product research, testing, and production to inventory management and customer support.

Technology is built in to everything we do.



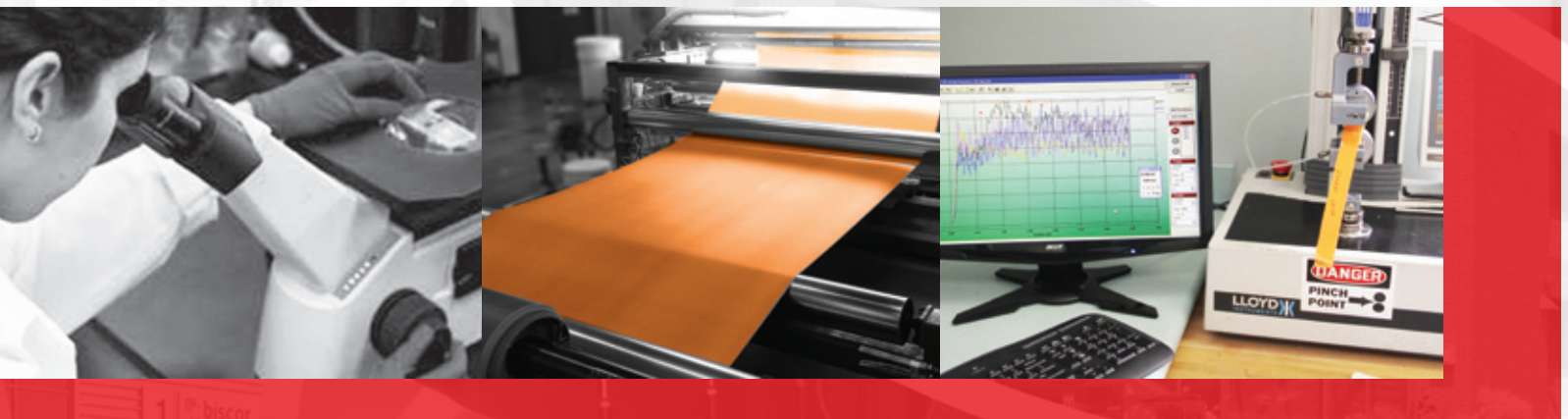
Ongoing Improvement

Product Research & Development

A cornerstone to the continuing success of PTFE Group as a manufacturer of engineered performance materials is our commitment to innovation through research and development. For over five decades, our R&D efforts in developing new products have provided an important connection between the four PTFE Group companies and their many customers.

Today, we continue to develop new coating compounds, additives, and adhesives to meet the ever-changing demands of end-use specifications. This not only ensures that we stay in step with ever-increasing demands for product performance, but also reinforces our commitment to the most important part of our business – the customer.

Whether its helping you find a solution to a tough technical problem or simply getting your order out on time, PTFE Group is committed to providing you with the widest choice of high-performing, cost-effective engineered process materials available.



Lean Manufacturing

From Code to Craftsmanship

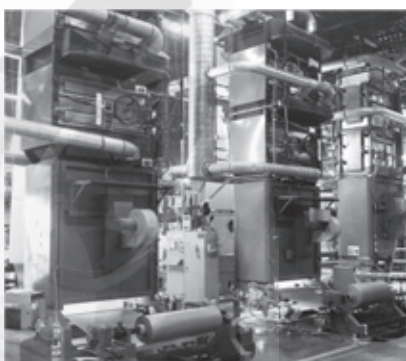
Computerized Manufacturing

Our approach to producing high-performance fabrics, tapes, and belts begins with computer-guided coating towers that utilize continuous sensor and feedback technology to precisely regulate coating thicknesses and consistency. Computer-driven adhesive and slitting machinery converts films and coated fabrics into tapes, while CNC plotters utilize customer specs and CAD drawings to create precision pre-cut shapes and engineered kits.

Skilled Fabrication

Skilled fabricators in all four of our plants, in Canada, Italy, UK, and the US, combine decades of experience, industry knowledge, and state-of-the-art facilities to deliver belts, tapes, and fabric/tape rolls and profiles.

All PTFE Group production, from coating to custom fabrication, meets our strictest quality standards en route to fulfilling specific customer requirements.





Culture of Excellence

Experience, Collaboration, Teamwork

The essence of our culture at PTFE Group is shaped by the core values of Integrity, Leadership, Quality, and Community. Through strong moral and ethical principles, respectful working relationships, and visionary leadership that 'walks the talk', the PTFE Group community adheres to a strong set of common attitudes, interests and goals. This helps to create the team-focused approach that we take to building excellence.

One clear example is the focus that we have placed upon supply-chain management and timely delivery. Utilizing the strengths of each of the four plant and fabrication locations, supply inventory and process workflow is managed to ensure that products are produced and shipped to our customers, anywhere in the world, in the most efficient way possible.

Whether it's problem solving, production optimization, or responding to more complex customer inquiries, openness to 'putting heads and hands together', leads to effective, efficient, and creative solutions.



"The product, the service, and the delivery... it's all great"

"PTFE Group is right on top of everything"

"We find that your product is very good for any kind of tape"

"We used to be disbelievers in your product. Then we tried it out. Now we're believers!"

"We've tried many samples from your competitors, but they don't hold up as well as yours"

"PTFE Group is meeting our expectations"

*"We asked you to align your deliveries to suit our system better and you responded
– that's good service!"*

"We've never had an issue with deliveries, and your sales rep is always been pleasant."

"We like the conformability of your HVOF tape"

*"The competitor's tape that we used to use, failed and the quality suffered. Then we tried a
few rolls of your tape, and our techs fell in love with it"*

"Customer Service has been really good"

"Whenever you guys find a weakness in your product, you don't let it sit, you improve it!"

"Our Customer Service Rep does a great job"

*"Service is good, and the tapes are as good or better than anything we've found,
and the same goes for your masking compound"*

"Customer service is always great; we've never had a problem"

"Your product is great, it's a well-run company, and your pricing is fair"



Improving performance and efficiency...

At PTFE Group, our approach to producing quality performance materials contemplates the vast range of unique manufacturing and processing demands and possibilities. These range from routine to complex, small to large, and from harsh to extreme.

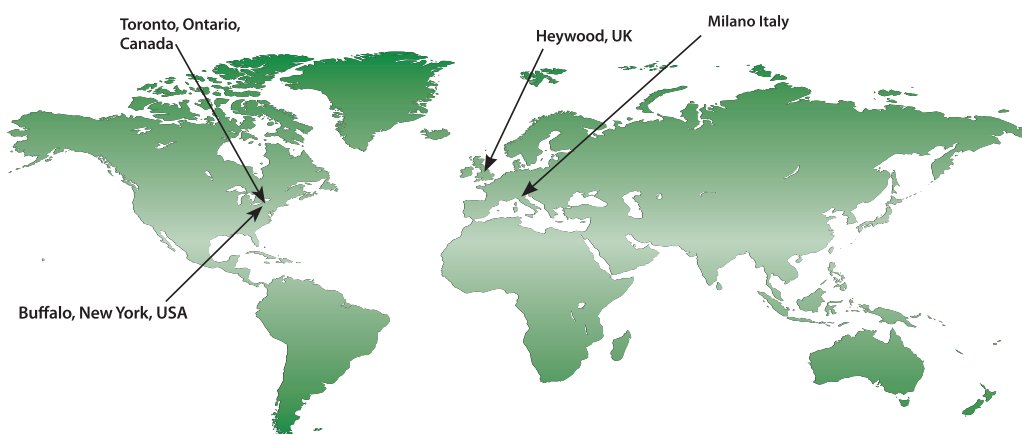
All of our **Engineered Performance Materials**, including fabrics, tapes, belts, and more, meet a diverse range of needs, from food processing to protection of heat-sealing packaging elements and masking against HVOF thermal spray. The quality and performance characteristics of PTFE Group materials leads to dramatic improvements in process efficiency and productivity in over 21 different industries. With more than a half-century of industry experience, and an ever-growing Knowledge Base, our products are supported with tips, techniques, examples, and helpful customer service to ensure best-fit and optimal end-use performance.

Advantages of PTFE Group Engineered Materials for a wide range of industrial applications

- + Wide range of quality engineered fabrics, tapes, and belting to meet a diverse range of needs
- + Quality engineering and manufacturing that improves end-use performance and process efficiency
- + Wide range of coatings, substrates, textures, & fabrication options offers greater control over output quality
- + PTFE Group products are engineered for industry-leading durability and re-usability

= **Our customers enjoy the advantage of enhanced operational efficiency and low process costs**

PTFE GROUP OF COMPANIES



Canada

green belting industries

381 Ambassador Drive
Mississauga, ON L5T 2J3
Canada
T: 905-564-6712
F: 905-564-6709
E: custserv@greenbelting.com
www.greenbelting.com

Italy

mapelli

Via del Lavoro 43
20060 Vignate, MI
Italy
T: +39.02.90967258
F: +39.02.90967236
E: info@mapelli-ptfe.com
www.mapelli-ptfe.com

UK

biscor

Unit 1, Broadfield Business Park
Pilsworth Road,
Heywood OL10 2TA UK
T: 0800 240 4476
F: 01706 396691
E: info@biscor.com
www.biscor.com

USA

greenbelt industries

45 Comet Street
Buffalo, New York 14216
USA
T: 1-800-668-1114
F: 905-564-6709
E: custserv@greenbelting.com
www.greenbelting.com

PTFE Group products are available from our authorized partner: