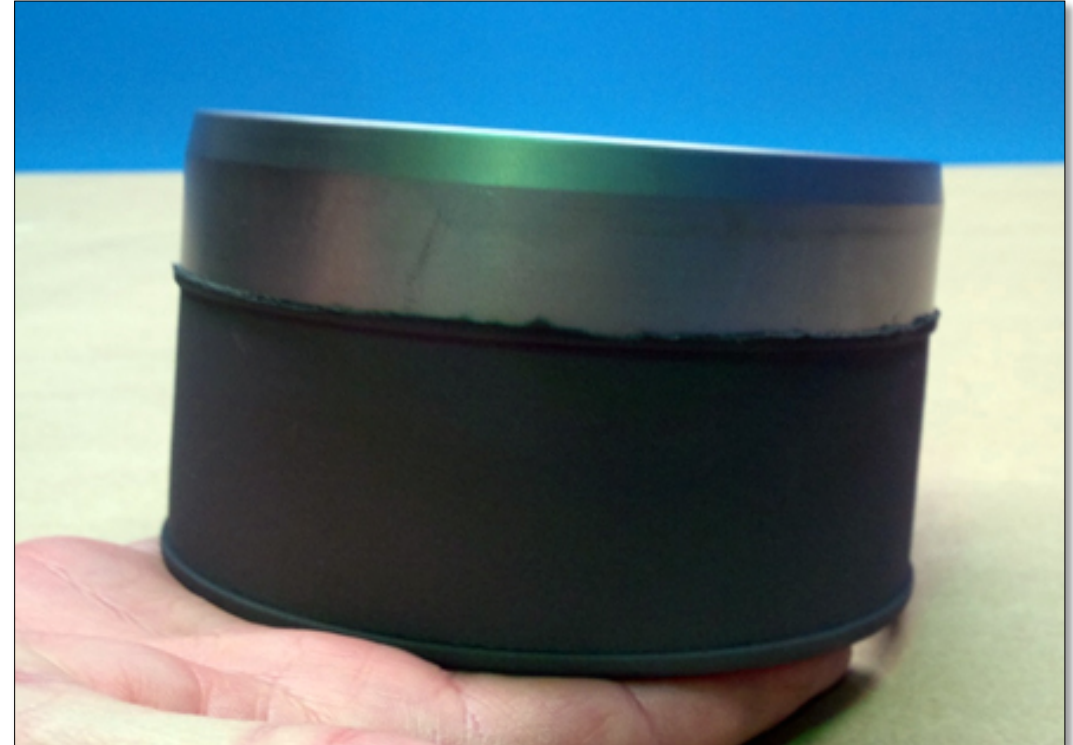


Poor Coating Edge Definition

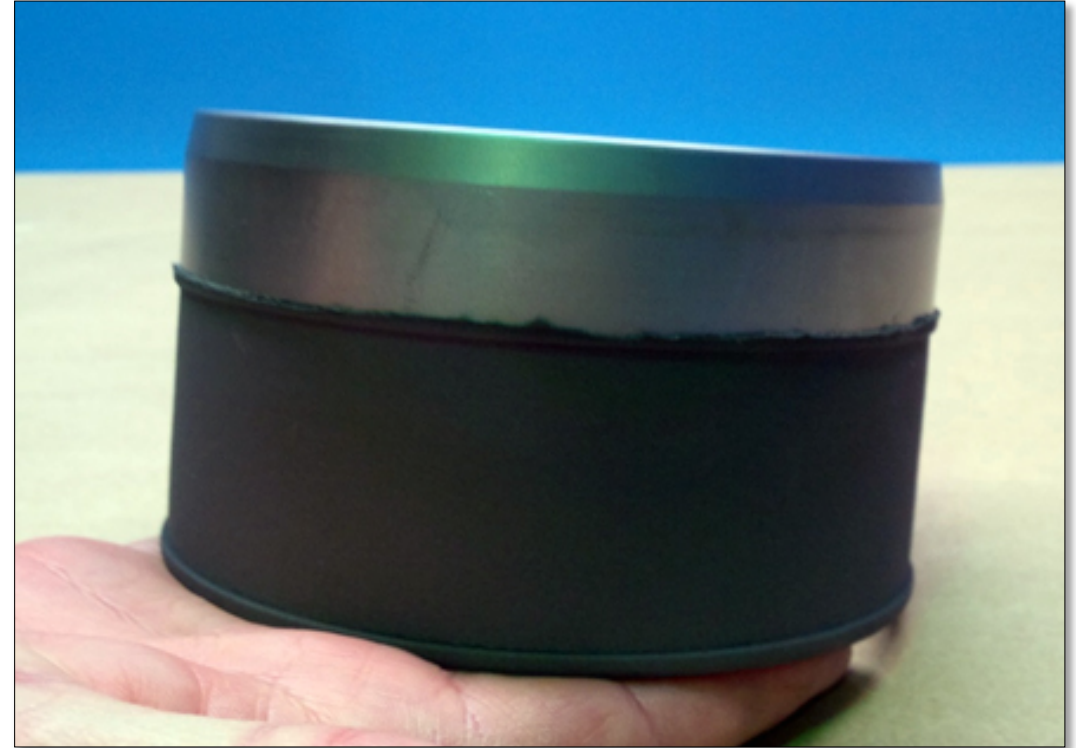
Tape edges fail resulting in

- Poor, burnt, or unacceptable edge definition
- Rejected parts
- Need for reworked parts
- Increased labour costs



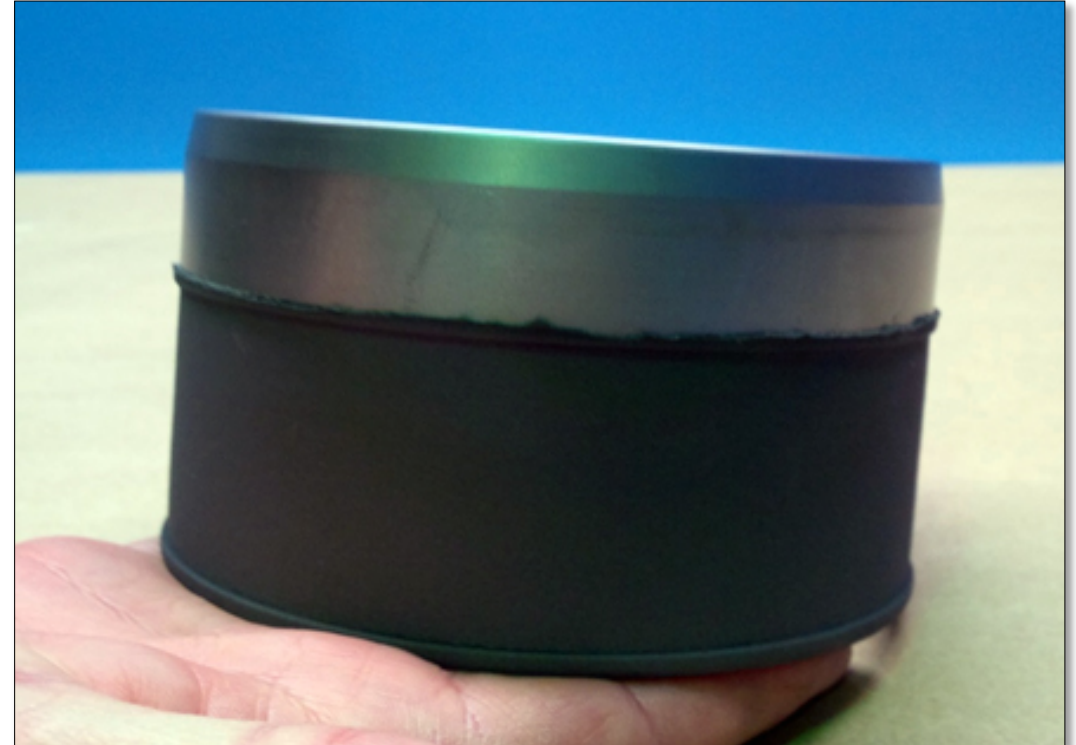
Edges curl and peel away due to:

- Low breaking strength of glass
- Lower abrasion resistance
- Poor heat resistance
- Low tear strength
- Low adhesive strength:
 - face to back
 - to metal



Edges curl and peel away due to:

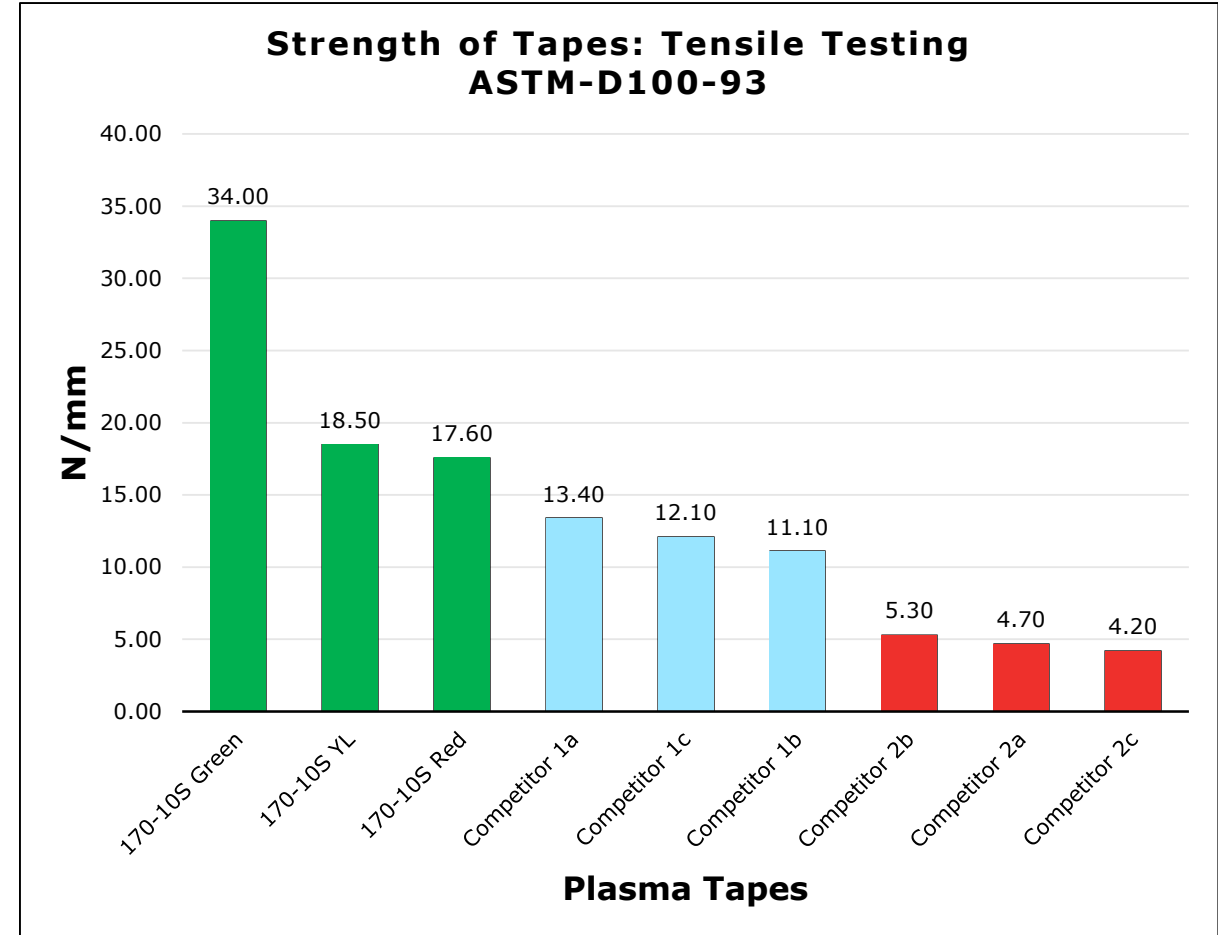
- Low breaking strength of glass
- Lower abrasion resistance
- Poor heat resistance
- Low tear strength
- Low adhesive strength:
 - face to back
 - to metal



SOLUTION: STRONGEST HIGH TENSILE STRENGTH



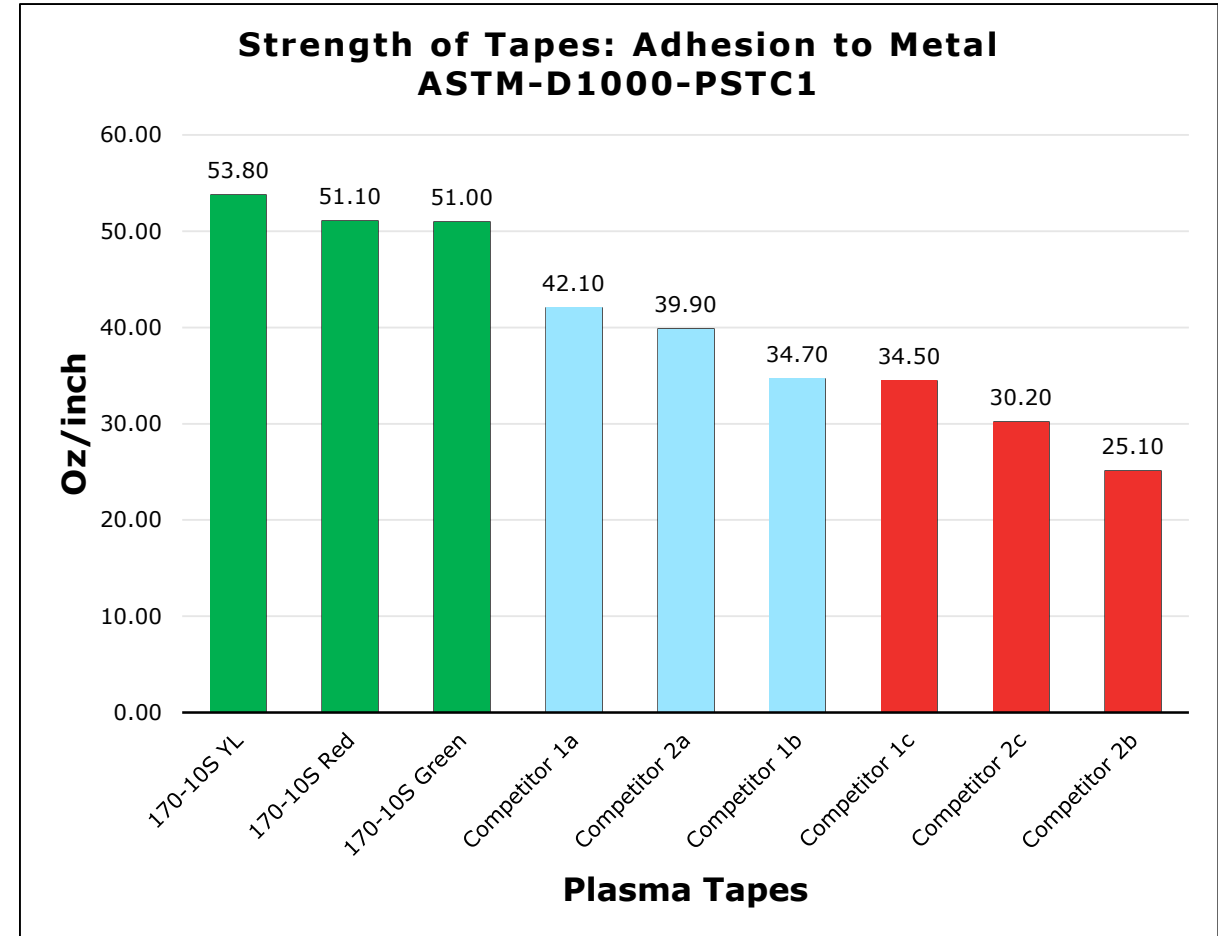
Green Belting tapes have industry leading tensile strength!



SOLUTION: STRONGEST ADHESION to METAL



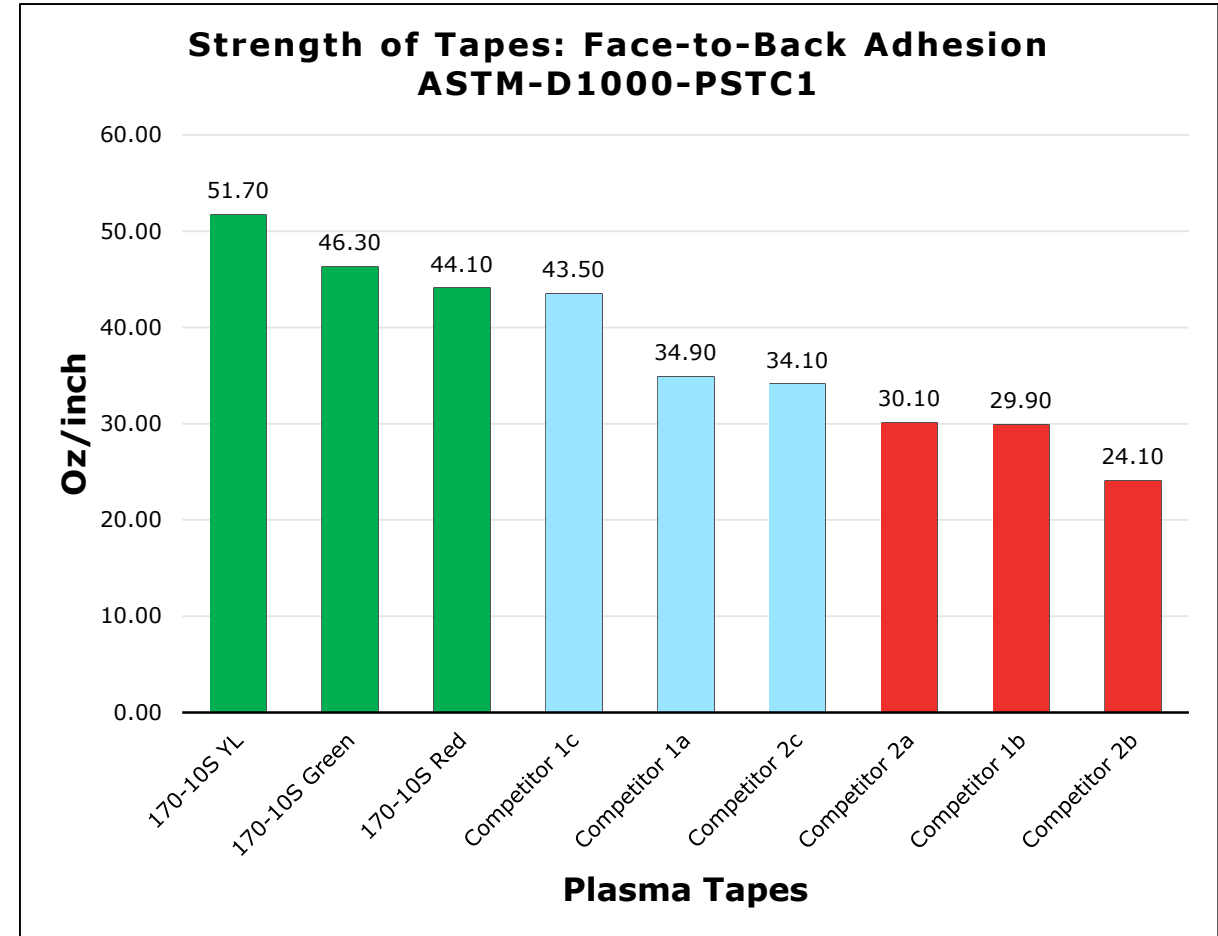
Green Belting tapes have industry leading adhesion to metal!



SOLUTION: STRONGEST FACE-to-BACK ADHESION

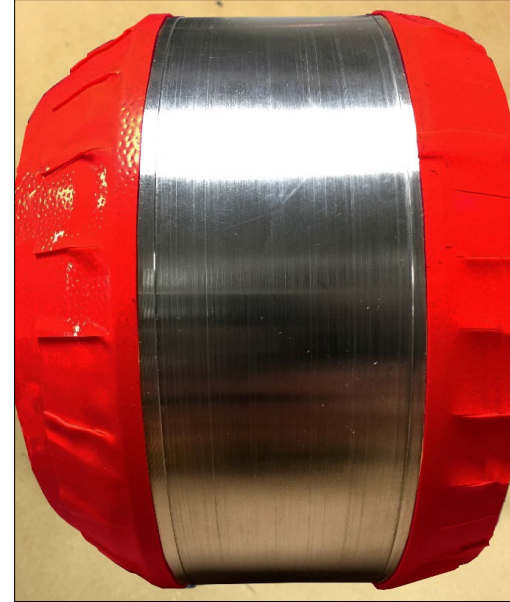


Green Belting tapes have industry leading face-to-back adhesion!



Green Belting Tapes

- High breaking strength
- High abrasion resistance
- High adhesion
- Flame retardant & self-extinguishing
- High performance adhesives hold firmly spray and release cleanly afterward



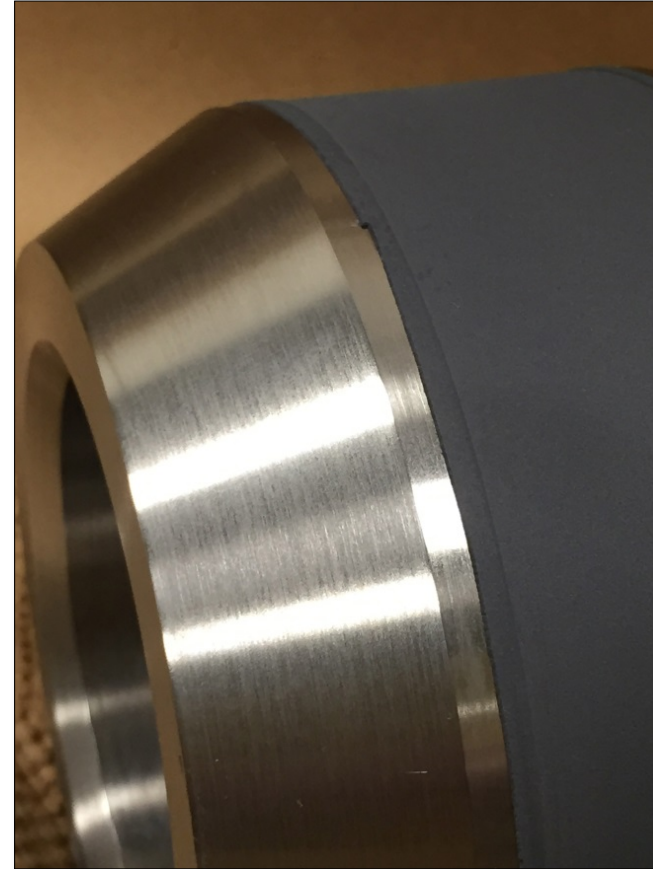
Part before coating



Post Coating

Green Belting Tapes

- Perfect coating lines achieved
- Clean removal, no adhesive residue
- No additional machining required



Post Coating, Masking Removed

WE MAKE YOUR
BUSINESS MOVE.